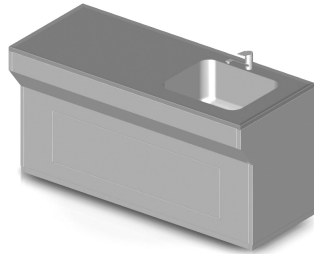


Washing

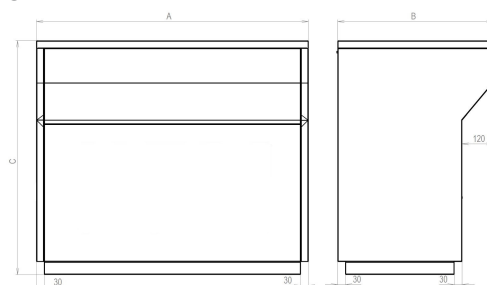
STAINLESS STEEL WASHING TABLES



- Stainless steel washing tables, along with the other elements of the Forlab stainless steel system, are a complete kit for setting up any furniture assembly that meets the customer's requirements. The table consists of worktop, frame and additional covering.
- The worktop consists of a P1.5 stainless steel sheet facing with a welded-in sink(s) and a laminate filler. From the perspective of design, it may be simple, with indentation (raised edge) or with edge raised by 40 mm.
- The frame is composed of H-shaped side legs and reinforcement bolted to the side legs. The legs feature standard adjustable feet allowing to adjust the table height (approx. 30 mm). When assembling two tables, one central leg, instead of two legs, is used for joining the two tables. The sheet covering may be one-sided, two-sided or three-sided.

Dimensional range:

Width (mm) 900; 1200; 1500; 1800
 Depth (mm) 600; 750; 900
 Height (mm) 900



TECHNICAL DATA

| |
|--------------------------------------|
| Type designation |
| Washing table GMP |
| Table frame material |
| Table frame material AISI 304 FIN SB |
| atypical |

Worktop material

Worktop material- stainless steel AISI 304

Worktop material- stainless steel AISI 316

atypical

Table construction type

Worktop design - Smooth without edges

Worktop design - Smooth with indentation along the perimeter

Width "A"

| value | width |
|-------|---------|
| Width | 900 mm |
| Width | 1200 mm |
| Width | 1500 mm |
| Width | 1800 mm |

Depth "B"

| depth | value |
|--------|-------|
| 600 mm | Depth |
| 750 mm | Depth |
| 900 mm | Depth |

Sink dimensions

| dimension | value |
|--------------------|-------|
| 400x400x250 | Sink |
| 400x400x300 | Sink |
| 500x400x250 | Sink |
| 500x400x300 | Sink |
| 500x500x300 (*) | Sink |
| 600x450x300 (*) | Sink |
| 600x500x300 (*) | Sink |
| 1280x510x215 (***) | Bath |
| 1280x510x340 (***) | Bath |
| 510x310x215 | Bath |
| 630x510x215 (*) | Bath |
| 960x510x215 (**) | Bath |
| 960x510x340 (**) | Bath |

(*) Sinks for table depth 750 and 900 mm.

(**) Vevařovací vany for table width 1500 and 1800 mm and table depth 750 and 900 mm

(***) Vevařovací vany for table width 1500 and 1800 mm and table depth 750 and 900 mm

Number and location of sinks

Two sinks

Two sinks on the right

Two sinks on the left

Sink on the left

Sink on the right

Sink in the middle

Mixer

without

mixer on the wall

Single lever mixer

Single lever pillar mixer with pull-out spout 00 - None

Water trap

| value | Material |
|------------|-------------------------|
| Water trap | Stainless steel AISI304 |
| Water trap | Stainless steel AISI316 |
| Water trap | plastic |

Variant of basic profile

Basic profile Stainless steel AISI304, 50mm

Basic profile is covered with flooring, 50mm

another solution

Atypical execution

Typical execution

Atypical execution

Typical execution

0 - clear choice from the options

Atypical execution

Q - Atypical design, which can not be clearly identified by means of code

MORE INFORMATION, PHOTOS

