

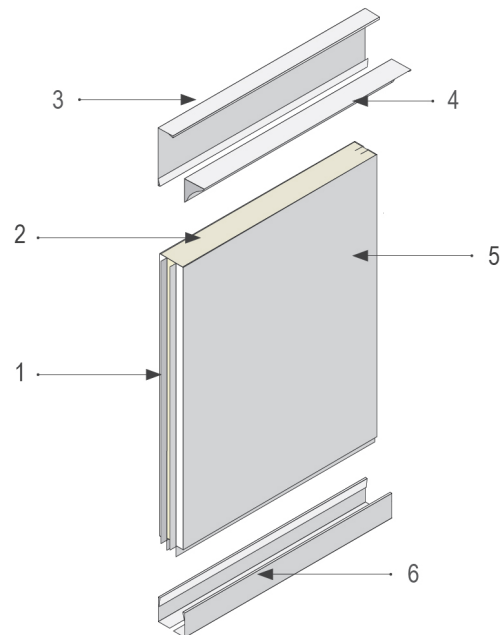
PARTITION PANEL WITH INCREASED THERMAL RESISTANCE



Panels with increased thermal resistance are used for the construction of thermochambers and cold storage boxes.

DESCRIPTION

- Sandwich-type panels, consisting of a shell and an inner filling.
- Panels connected by mutual sliding; self-supporting.
- It differs from the basic partition panels by the filling and anchoring to the side partition panels, the floor and the ceiling.
- Media distribution, electrical distribution and HVAC distribution are conducted on the surface, or from the outside of the clean room



1 - Facing; 2 - Filler; 3 - L-profile perpendicular; 4 - L - profile for Fabion; 5 - Facing; 6 - 2x L profiles

BENEFITS

- In areas constructed with these panels, temperature and pressure according to the customer's requirements are maintained.
- The whole system of connecting panels to each other and to other components (i.e. door casings, ceiling panels, anchoring to the floor) is designed in such a way as to eliminate thermal bridges and minimise heat transfer.
- This panel system also contains other elements for the construction of complete boxes:

TECHNICAL DATA

Panel type

partition panel with increased thermal resistance

Panel thickness T

102 mm

122 mm

62 mm

82 mm

Panel width S

1190 mm

560 mm

S - width in mm according to dimensional range 560 mm, 1190 mm. Preferred dimensions: 1190 mm, 560 mm. It is possible to order atypical panel dimensions: min. dimension 300 mm, max. dimension 1190 mm.

Panel height H

2400 mm

2600 mm

Panel height 2400 and 2600 mm. Min. dimension 300 mm, max. dimension 4000 mm.

Filler

Styrofoam IB

Facing hue and material - standard on the visible side

Galvanized metal sheet, hue RAL 9002

Galvanized metal sheet, hue RAL 9016

Stainless steel AISI 304

Powder coating (Komaxit), hue RAL

Atypical design

Type design

Atypical design

Type design

0 - Unique specification out of offered versions

Atypical design

Q - atypical design that cannot be uniquely specified by a code

MORE INFORMATION, PHOTOS

